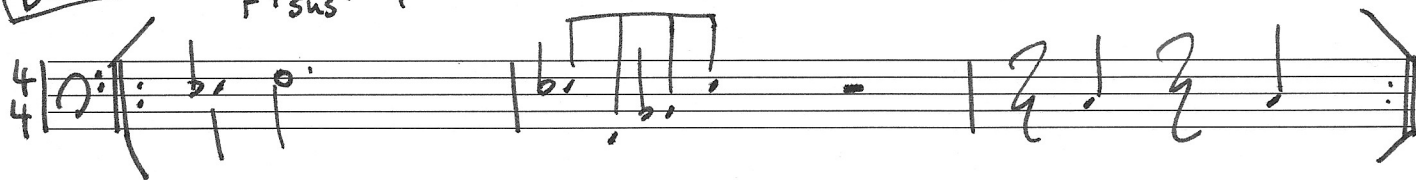


JOÃO

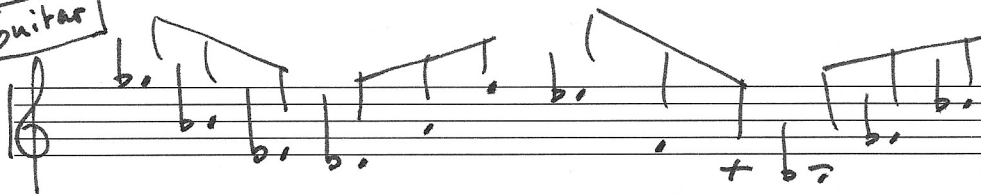
PABLO
HELD

Bass

F7sus4b9



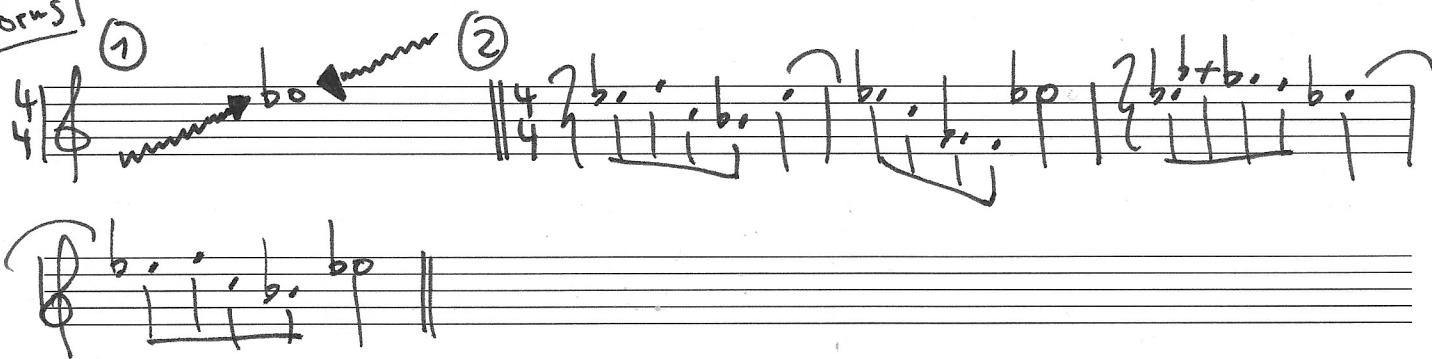
Guitar



Piano + Horn / Celesta



Horns



JOÃO (1)

JOÃO - (2)

A handwritten musical score for the song "The Rose Tree". The score is written on two staves, one for the treble clef and one for the bass clef. The key signature is one flat (B-flat), and the time signature is 4/4. The melody is written in the treble clef, and the bass line is in the bass clef. The score consists of three measures. The first measure has a treble clef, a key signature of one flat, and a 4/4 time signature. The melody starts on a half note G4, followed by a quarter note A4, and a half note Bb4. The bass line starts on a half note G3, followed by a quarter note A3, and a half note Bb3. The second measure has a treble clef, a key signature of one flat, and a 4/4 time signature. The melody starts on a half note C5, followed by a quarter note D5, and a half note E5. The bass line starts on a half note G3, followed by a quarter note A3, and a half note Bb3. The third measure has a treble clef, a key signature of one flat, and a 4/4 time signature. The melody starts on a half note F5, followed by a quarter note G5, and a half note A5. The bass line starts on a half note G3, followed by a quarter note A3, and a half note Bb3. The score ends with a double bar line and repeat dots.

②